

Increase environment, health, safety, and sustainability compliance for your organization

Enable real-time solutions provided by Rizing

Promote a safer workplace for your employees



Incident Management

- Use standardized, workflow-enabled processes to investigate, track, and follow up on incidents
- Access data from other SAP® software with prebuilt data and business process integration
- Improve visibility of EHS risks with automated global reporting and real-time analytics



Health and Safety Management

- Establish a unified approach to EHS risk assessment including different risk analysis methods
- Manage chemicals effectively, including vendor safety management and industrial hygiene monitoring
- Track employees' health and support a risk-based occupational health process that's integrated with central HR data



ESG and Sustainability

- Emissions Management tracking available for end-to-end environment management compliance
- Collecting and tracking ESG and Sustainability KPIs that relate to Environmental, Social, Governments, and Sustainability
- UN-SDG data collection calculation tracking and recording
- Carbon footprint tracking and advanced analytics



Compliance Management

- Provide a central legal registry with integration to external content providers that update your processes with regulatory changes
- Assign legal requirements and internal policies to operations within your organization
- Establish consistent compliance workflows



Worker Safety Management

- Integrate risk management and asset management processes
- Pull risk information into work orders and propose relevant safety measures automatically
- Provide standard icons and clear instructions on job cards
- Deliver enterprise visibility on employee training and certification compliance



Management of Change

- Automate identification of experts and approvers
- Streamline MOC checklists and rules
- Administer workflow and status management tools

Elevate Your Environment, Health, Safety, and Sustainability Programs

EHS Solutions

- Safety Observations
- Incident Management
- Near Miss Risk Assessment
- Industrial Hygiene and Sampling
- Work Clearance Management
- Job Hazard Analysis
- Chemical and Hazardous Substance Management
- Regulatory Compliance
- Management of Change
- Environment Management
- Emissions Management
- Sustainability and ESG Tracking

“**SAP® EHS Management** has greatly helped standardize our health and safety management processes for both workers and environment. It integrated with the rest of our SAP software for better alignment and collaboration across the company.”

~ **US-based Utility Customer**

104%

Increase in employee participation in safety programs

52%

Reduction in preventable incidents (in the first two years)

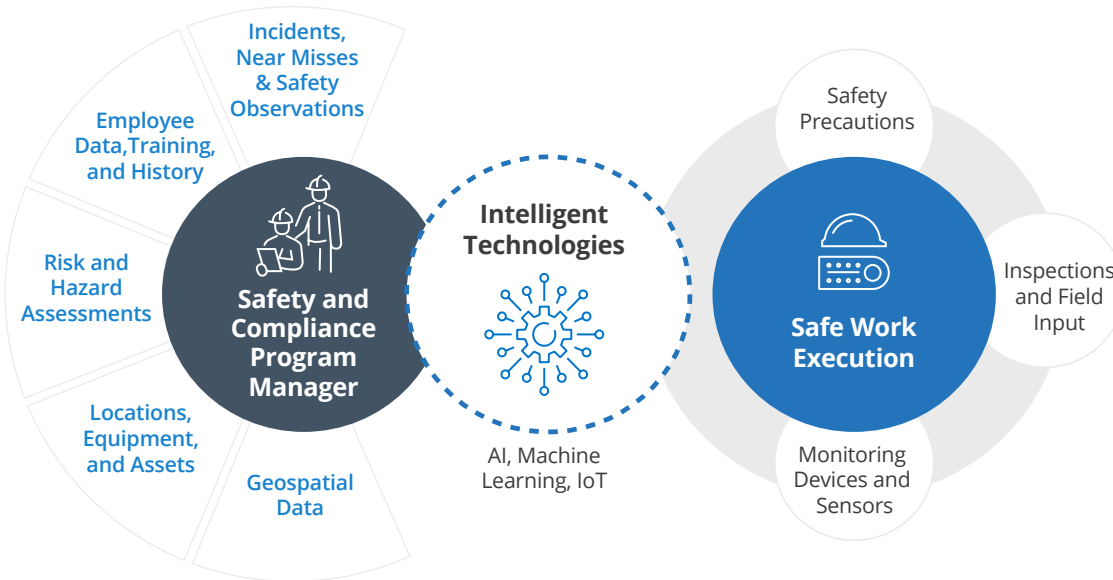
38%

Reduction in both recordable and days away, restricted or transferred (DART) incidents, year over year



Enterprise visibility on employee training and certification compliance

Safety and Compliance on the Intelligent Enterprise



Mobile Ready



SAP Master Data Sources



Real-time Datasheets

Better Compliance, Lower Risk



Ready to improve your corporate EHS programs? Email eam@rizing.com for more information or to schedule a conversation with Rizing today

rizing.com
eam@rizing.com

Copyright © 2023 Rizing LLC or a Rizing LLC affiliate company. All rights reserved. This document is provided for information purposes only, and the contents are subject to change without notice. This document is not warranted to be error-free, nor subject to any other warranties or conditions, whether expressed orally or implied in law, including implied warranties and conditions of merchantability or fitness for a particular purpose. We specifically disclaim any liability with respect to this document, and no contractual obligations are formed either directly or indirectly by this document. This document may not be reproduced or transmitted in any form or by any means, electronic or mechanical, for any purpose, without our prior written permission.

All other trademarks referenced herein are the property of their respective owners.

RIZING
a wipro company