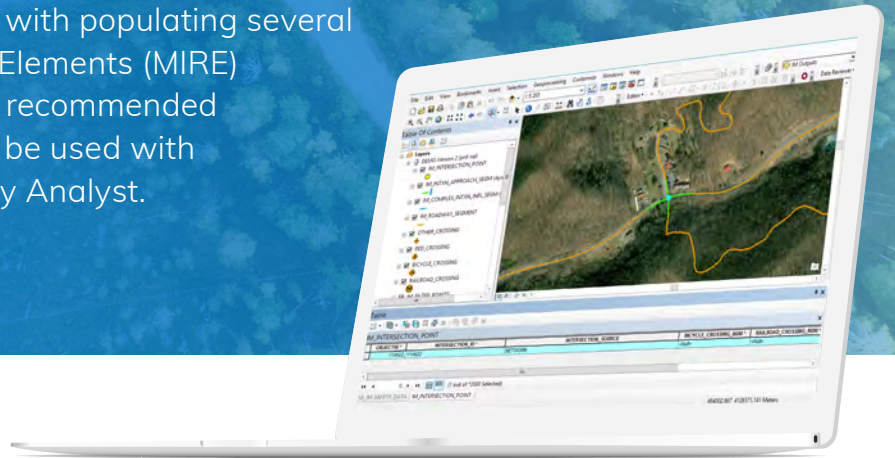


## POPULATE CRITICAL INTERSECTION ATTRIBUTES AND MANAGE COMPLEX INTERSECTIONS AND INTERCHANGES WITH INTERSECTION MANAGER™

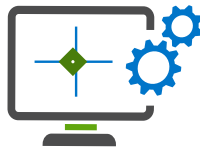
Designed as an ArcGIS add-in tool, Intersection Manager™ (IM) assists transportation agencies with populating several of the Model Inventory of Roadway Elements (MIRE) Fundamental Data Elements (FDEs) recommended by FHWA. Populated data can then be used with safety analysis tools including Safety Analyst.



## Key Features & Functionalities



Configure agency specific source data inputs and dates (for temporal data viewing)



Utilize single point intersections and auto-populate key MIRE FDEs



Leverage complex intersection extents to populate related intersections, route extents, ramps, and structures



Keep intersection data up to date as changes are made to your road network



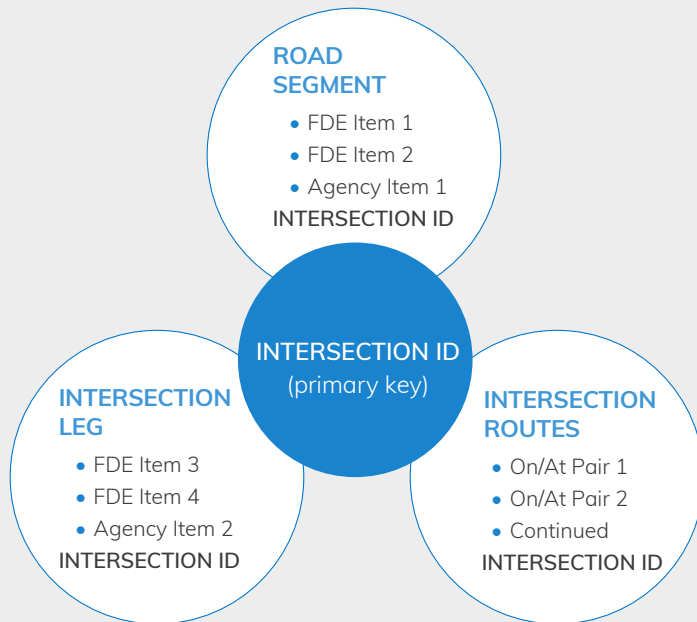
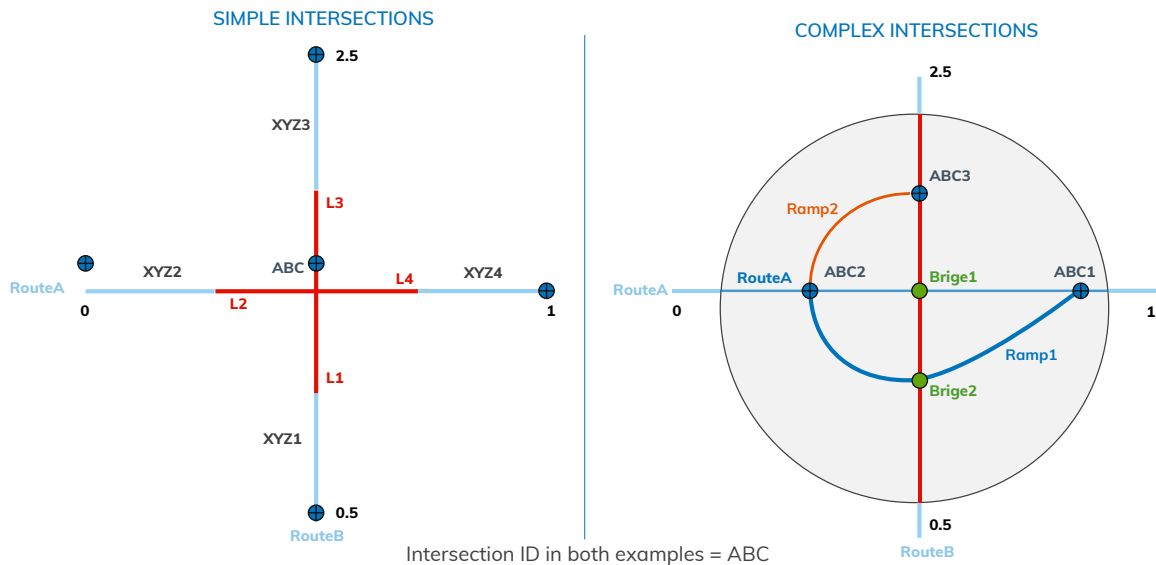
Maintain associated detail tables to store MIRE attributes not generated by IM



Filter unwanted intersections to eliminate grade separated crossings

## How can your organization benefit from a spatially enabled intersection database model?

IM generates a single-point intersection geometry at the intersection of every crossing road in the GIS. It populates route and measure, calculates and populates angles of approach, and defines the extent of intersection “legs.” Complex intersections or interchanges are also delineated and populated with appropriate attribution.



Using that single-point location and a primary key, the other key attributes needed to support the intersection MIRE data structures can be associated to the intersection.

Features such as the crossing, route segments, and approach legs can then be associated to the single-point geometry via the primary key.

FDEs including associated intersection leg identities, angles of approach, influence extents, major/ minor route designations, and traffic volumes are then populated for each intersection component from the GIS and associated road data.

Get the Actionable Insights You Need, Today



Ready to make your data work for you? Email [geospatial@rizing.com](mailto:geospatial@rizing.com) for more information or a solution overview.

[rizing.com](http://rizing.com)  
[geospatial@rizing.com](mailto:geospatial@rizing.com)

