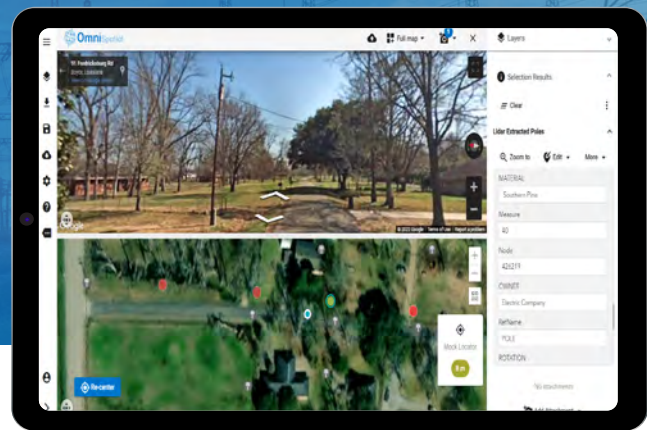


INNOVATIVE MAPPING FOR ASSET MANAGEMENT AND MAINTENANCE WORKFLOWS FOR UTILITIES

Rizing's OmniSpatial product is a progressive web application designed for field and office data collection and maintenance workflows. The architecture of the application allows it to work seamlessly with other asset management applications such as SAP's Asset Manager or Rizing's Hydrogen mobile applications to provide robust mapping capabilities in the field for both online and offline conditions.

OmniSpatial natively integrates with Esri ArcGIS Enterprise while providing a framework to integrate and fully leverage investments in other spatial data products.



DATA INTEGRATION

OmniSpatial consumes Esri map and feature services for data viewing and updates in addition to importing GeoJSON, Google KML, and other GIS data formats. Integrated sources such as weather, environmentally sensitive areas, and crew locations support real time operational and situational awareness out in the field.

OFFLINE CAPABLE

OmniSpatial is a progressive web application that loads into modern web browsers and runs without online access. Data can be cached to mobile devices for field use, and newly collected or updated data will sync to the source system once the device is online.

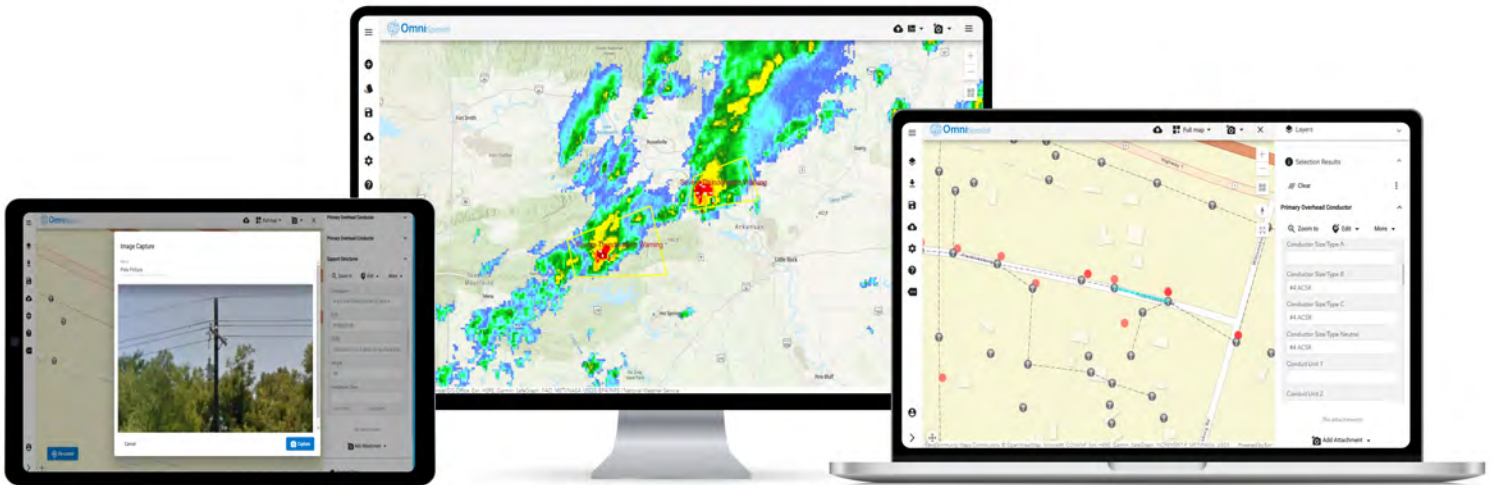
SAP INTEGRATION

OmniSpatial's map interface can be integrated with SAP Asset Manager to provide a more robust and unified mapping experience. Correcting asset locations based on field inspections (red-lining), getting directions to assets, and generating notifications on assets are just a few of the features available to users.

CREW SPECIFIC DATA AND CONFIGURATIONS

OmniSpatial is configurable for any number of field or office uses based on the authenticated user's role in the organization. Role based maps, data, and user interfaces provide an initial, consistent user environment. Users can also adjust and save personal configurations based on individual preferences.

Key Features and Functionalities



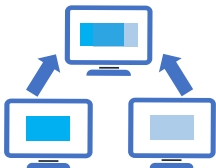
Collect and correct (red-line) asset locations based on GPS coordinates or other location sources



Deploy OmniSpatial on devices running a modern web browser



Capture photos, video, audio and notes to augment asset attributes



Open multiple panels to see different views and formats of data



Route from current location to specific asset or work order locations



Synchronize data back to source systems for quality verifications and updates

Get the Actionable Insights You Need, Today



Ready to make your data work for you? Email geospatial@rizing.com for more information or a solution overview.

rizing.com
geospatial@rizing.com



Copyright © 2022 Rizing LLC or a Rizing LLC affiliate company. All rights reserved. This document is provided for information purposes only, and the contents are subject to change without notice. This document is not warranted to be error-free, nor subject to any other warranties or conditions, whether expressed orally or implied in law, including implied warranties and conditions of merchantability or fitness for a particular purpose. We specifically disclaim any liability with respect to this document, and no contractual obligations are formed either directly or indirectly by this document. This document may not be reproduced or transmitted in any form or by any means, electronic or mechanical, for any purpose, without our prior written permission.

RIZING