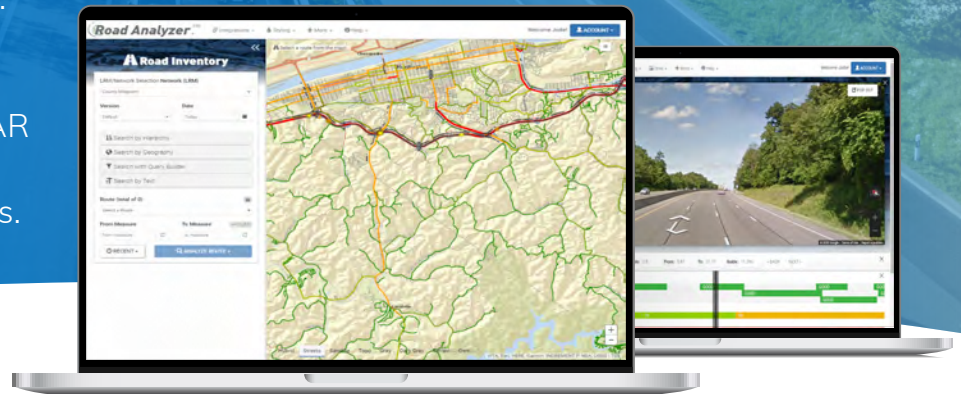


## VISUALIZE LINEAR REFERENCED DATA IN A STRAIGHT-LINE FORMAT WITH ROAD ANALYZER™

Road Analyzer, Rizing's interactive straight-line diagramming (SLD) product, dynamically displays location and business data using common linear referencing methods. The flexible and customizable data display allows users to easily locate an area of interest and view multiple layers of point and linear features.

Road Analyzer's architecture provides for the integration of associated maps, video logs, LiDAR point clouds, data editing, and a variety of other data analysis tools.



## Multiple Users Can Benefit from Road Analyzer

### GIS ANALYSTS AND PLANNERS

- Access data from across your organization for better and more efficient decision making
- Launch Road Analyzer from traffic and safety management systems to get detailed information about hot spots
- View associated video logs to minimize trips to the field

### SURVEYORS AND ENGINEERS

- Dig deeper to get roadway characteristics at a project location
- View associated design files and BIM models
- Markup diagrams to indicate issues found in the field

### STAKEHOLDERS

- Provide access to other local or state agencies to reduce time spent creating custom reports
- Allow the public to view selected information on assets and events
- Share SLDs with contractors that need detailed road information before bidding

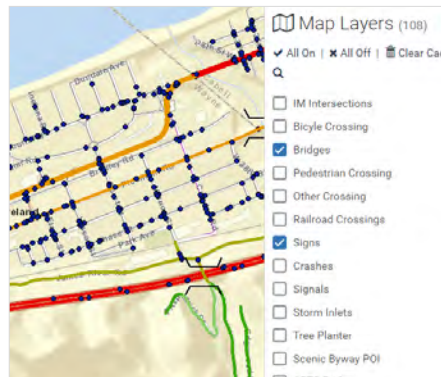
### EXECUTIVE MANAGERS

- Provide saved views to obtain up-to-date information on high-profile projects
- Open Road Analyzer from executive dashboards to get asset details at selected locations
- Visualize how much money is being spent on specific locations and on what kinds of projects

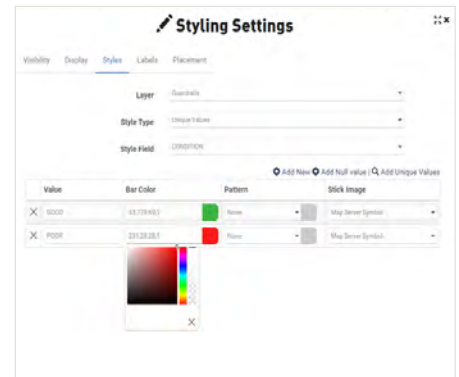
# Key Features & Functionalities



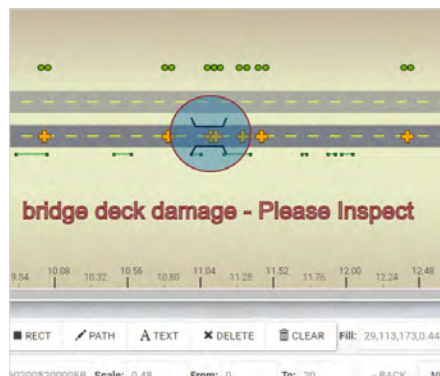
- Search locations using multiple methods including hierarchy, geography, map and text queries
- Specify the extent of the segment you wish to view and analyze



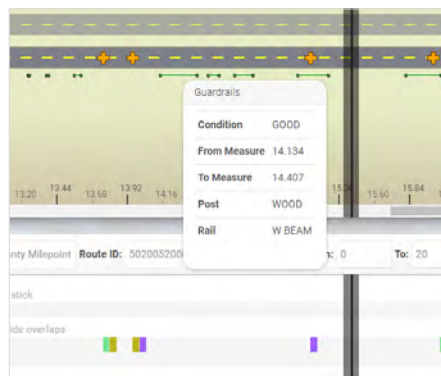
- Utilize the interactive map to pan and zoom to investigate assets
- Turn features on and off using the map legend



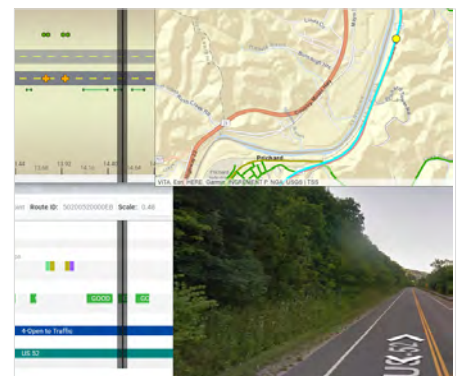
- Configure the SLD display by turning layers on and off, changing the order of layer display, setting display symbology based on unique values or ranges, or labeling assets with database values
- Save configured SLD displays as private or public templates for reuse



- Redline, annotate and highlight areas of interest using drawing tools
- Share annotated SLDs via email
- Use the reporting tools to bulk print "SLD books"



- Hover over assets to view summary data or select the asset for detailed attributes
- View attribute windows providing statistics and coverage details
- View and export asset attributes for external use



- Integrate maps and video viewing applications
- Launch editing tools to view and modify source data.
- Access specific Road Analyzer data views from external applications